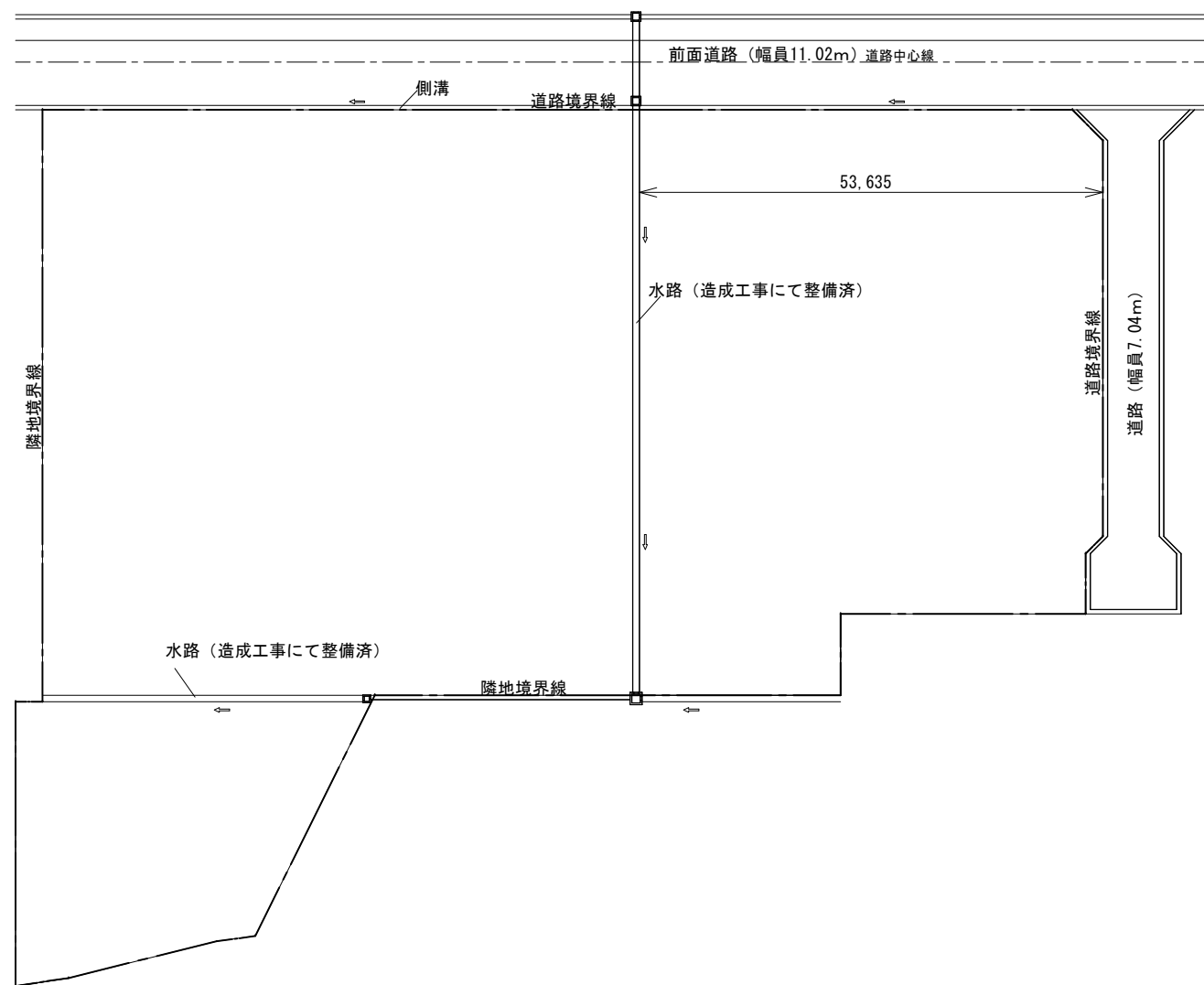
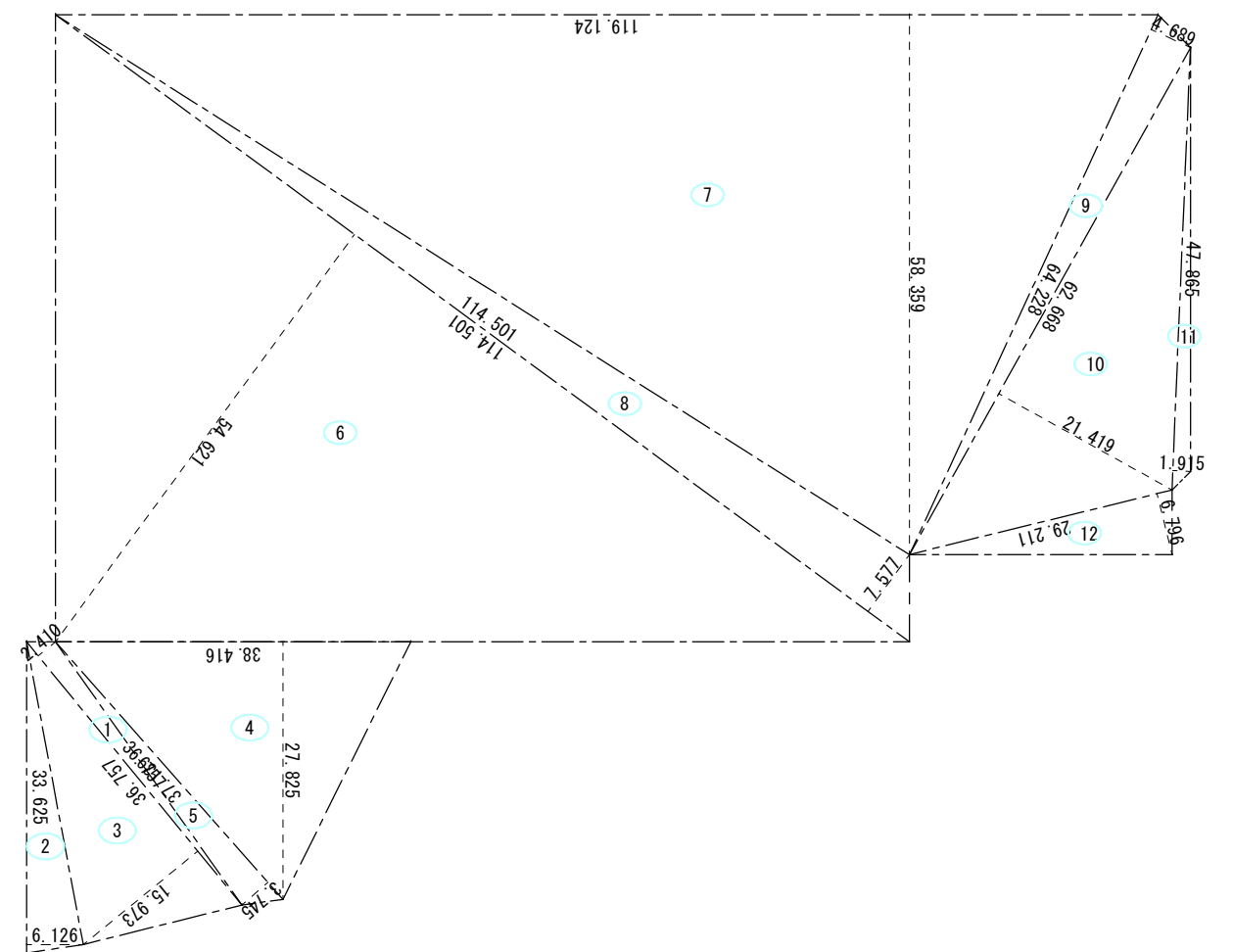


番号	計 算 式	面 積
1	$36.757 \times 2.410 \times 1/2$	44.2921850
2	$33.625 \times 6.126 \times 1/2$	102.9933750
3	$36.757 \times 15.973 \times 1/2$	293.5597805
4	$38.416 \times 27.825 \times 1/2$	534.4626000
5	$37.139 \times 3.745 \times 1/2$	69.5427775
6	$114.501 \times 54.621 \times 1/2$	3,127.0795605
7	$119.124 \times 58.359 \times 1/2$	3,475.9787580
8	$114.501 \times 7.577 \times 1/2$	433.7870385
9	$64.228 \times 4.689 \times 1/2$	150.5825460
10	$62.668 \times 21.419 \times 1/2$	671.1429460
11	$47.865 \times 1.915 \times 1/2$	45.8307375
12	$29.211 \times 6.796 \times 1/2$	99.2589780
合 計		9,048.5112825
敷 地 面 積		9,048.51 m ²



計 画 敷 地 図



求 積 図